

rayTEC®

Distributed by



PRODUCT OVERVIEW

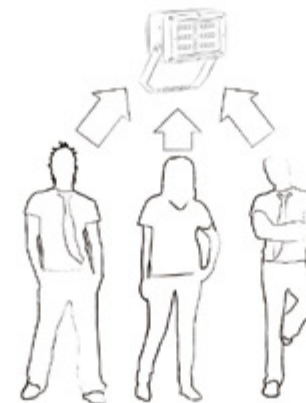


Hazardous Area Luminaires



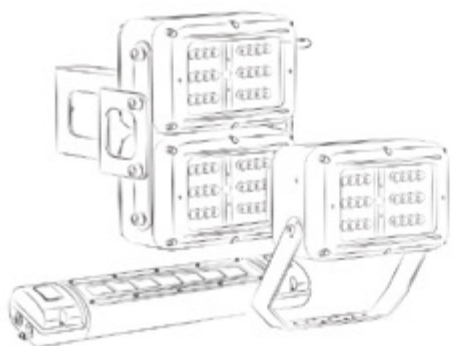
UK Designed and Manufactured

All Raytec hazardous area products are designed and manufactured in the UK and are ATEX and IEC Ex approved. We're so confident in our quality that all our products come with a 5 year warranty. Raytec are also ISO9001 and ISO14001 certified.



Lighting Specialists

Raytec and all our people are 100% focused on lighting. Everything from product design, to manufacture, to sales and after sales service is under one roof at our Global HQ.



Full Product Family

Raytec manufacture a full range of hazardous area lighting with SPARTAN Flood, Linear, Bulkhead and Crane lighting, meaning there's a solution for any application.

rayTEC®



Global Reach

Based at our HQ, near Newcastle, UK, we also have sales offices in Canada, Germany and China.

Our products are successfully deployed globally from the Arctic Circle to the Jungles of Borneo.

10 YEARS

2005 - 2015

Our Background

Founded in 2005, Raytec are the world leaders in LED lighting for security and safety, with over half a million products currently in service. We've used our expertise to create SPARTAN – a high performance range of Hazardous Area lighting which delivers class leading performance and reliability.

SPARTAN FLOOD



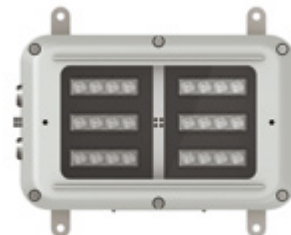
SPARTAN Flood is a complete family of hazardous area floodlights. Available in 3 sizes and as standard or emergency variants, SPARTAN delivers the highest performance, most energy efficient, modular and maintenance friendly solution for hazardous environments.

SPARTAN LINEAR



SPARTAN Linear luminaires are available as standard or emergency variants and are designed for new installations or to retrofit existing fluorescent installations, easily allowing the customer to enjoy all the benefits of LED lighting while making regular lamp changes redundant.

SPARTAN BULKHEAD



SPARTAN Bulkhead is a compact, low profile luminaire designed for restricted space applications. SPARTAN Bulkhead provides the highest performance and efficiency while maintaining excellent reliability. SPARTAN Bulkhead luminaires are available as standard or emergency variants.

SPARTAN CRANE



The SPARTAN Crane luminaire is designed specifically for use on Marine/Offshore boom cranes where high performance, high reliability, White-Light illumination is required to ensure the safety of crane operations. SPARTAN Crane luminaires are available as standard or industrial variants.



ATEX and IEC Ex Approved Zone 1 and 2
UL/CSA approved including C1D2



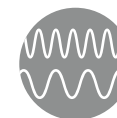
American Bureau of Shipping approval



5 Year Warranty



UK Designed and Manufactured



Available in White-Light and Infra-Red



Emergency Variants Available

SPARTAN FLOOD



Robust

Housed in marine grade aluminium with A4 stainless steel fasteners and brackets, SPARTAN Flood is IP66 and IP67 rated and can survive in the most extreme environments.

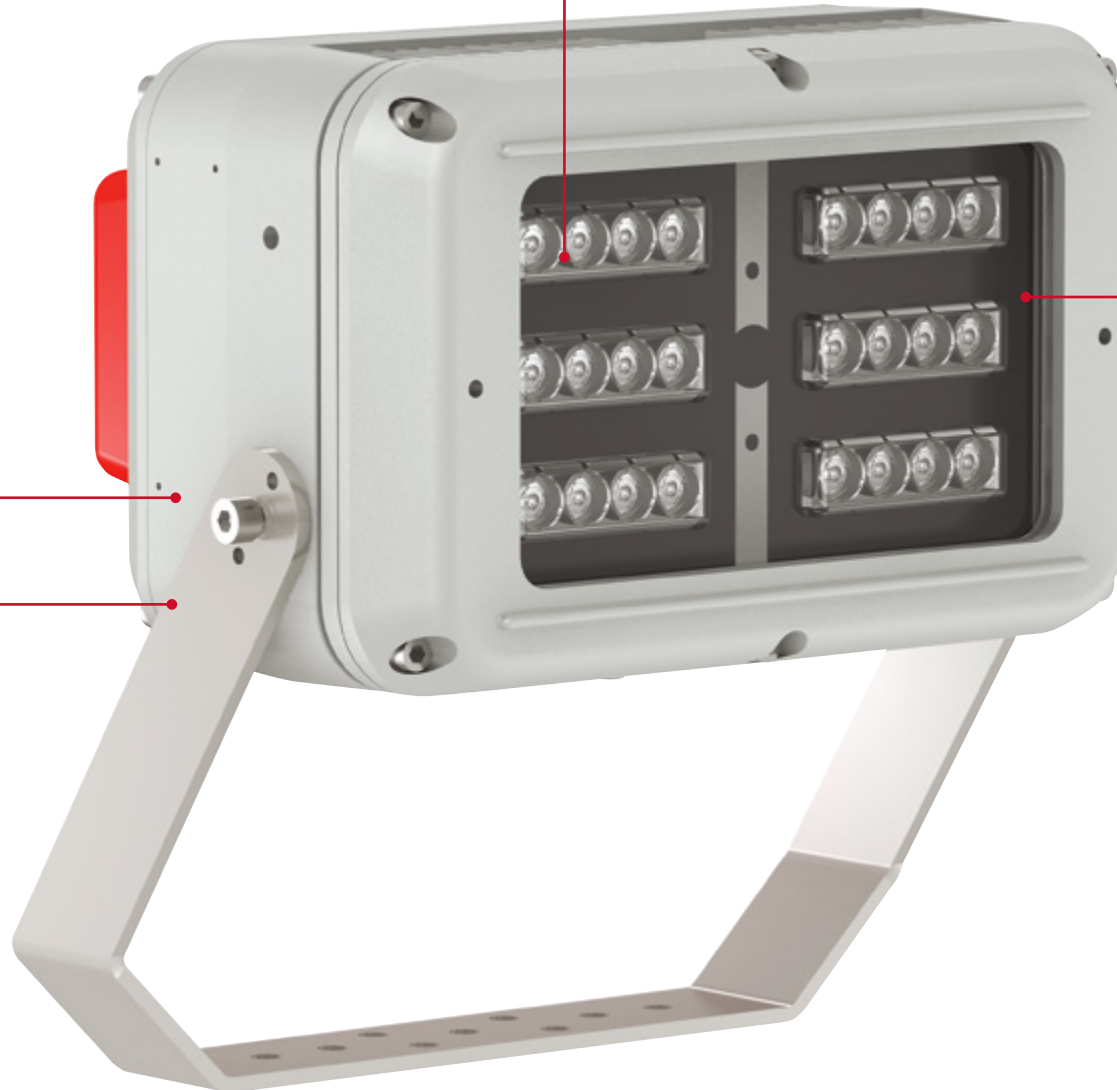
Wide Operating Temperature

An operating temperature range of -50°C to + 55°C* with a T4/T5/T6 rating means SPARTAN Flood is suitable for even the most challenging conditions.

** Emergency variants have an operating temperature of -20°C to +55°C*

Ultra-Powerful

SPARTAN Flood integrates the latest high power LEDs with Raytec's field proven LED management and optic technology. This delivers a high lumen output of up to 15,000 lumens even during emergency operation when running off the integral battery.



VARIO Technology

SPARTAN Flood is available with a variety of different beam patterns, both circular and elliptical. Elliptical illumination angles can be altered on-site with our unique VARIO interchangeable lens system.

LED Friendly

SPARTAN Flood uses CoolExtrude™ thermal management technology, ensuring a much cooler LED operating temperature. This provides up to 60% better heat dissipation compared to traditional lighting solutions and allows the product to operate for 10+ years in the most challenging environments.



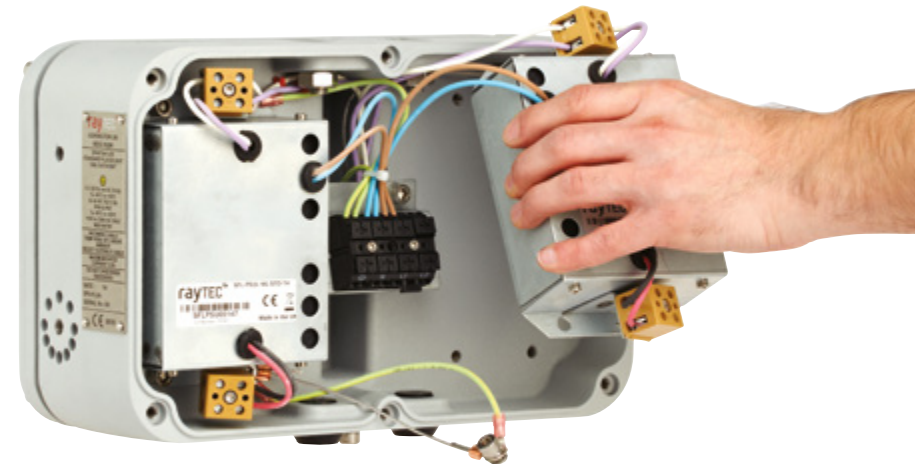
Emergency Back-Up

SPARTAN Flood* is available as a high performance emergency variant, using an additional battery back-up module which can deliver up to 100% light output under emergency conditions.

** Excludes SPARTAN Flood FL12*

Flexible Installation and Easy Maintenance

The modular design allows great flexibility – the entire PSU chassis can be removed and located remotely at ground level for areas with difficult access. Additionally the individual PSU modules can be easily accessed and replaced making servicing and inspection of all key components quicker and easier.





**SPARTAN
FLOOD FL72**



**SPARTAN
FLOOD FL72 Emergency**



**SPARTAN
FLOOD FL48**



**SPARTAN
FLOOD FL48 Emergency**

Certification	ATEX and IEC Ex rated for Zone 1 & 2 Gas and Dust UL/CSA including C1D2	ATEX and IEC Ex rated for Zone 1 & 2 Gas and Dust UL/CSA including C1D2 (pending)	ATEX and IEC Ex rated for Zone 1&2 Gas and Dust UL/CSA including C1D2	ATEX and IEC Ex rated for Zone 1&2 Gas and Dust UL/CSA including C1D2 (pending)
Angles	10°x10° / 35°x10° / 60°x25° / 80°x30° / 120°x50° +30, 50 and 120° circular options	10°x10° / 35°x10° / 60°x25° / 80°x30° / 120°x50° +30, 50 and 120° circular options	10°x10° / 35°x10° / 60°x25° / 80°x30° / 120°x50° + 30, 50 and 120° circular options	10°x10° / 35°x10° / 60°x25° / 80°x30° / 120°x50° + 30, 50 and 120° circular options
Input	110-253V 50/60Hz AC only 18-30V AC/DC	110-254V 50/60Hz AC only	110-254V 50/60Hz AC only 18-30V AC/DC	110-254V 50/60Hz AC only
Beam Shape	Elliptical or Circular	Elliptical or Circular	Elliptical or Circular	Elliptical or Circular
Beam Angle System	VARIO interchangeable lens system (elliptical) / Fixed (circular)	VARIO interchangeable lens system (elliptical) / Fixed (circular)	VARIO interchangeable lens system (elliptical) / Fixed (circular)	VARIO interchangeable lens system (elliptical) / Fixed (circular)
Consumption	204w	207W	136W	139W
LED type	Platinum Elite SMT LEDs	Platinum Elite SMT LEDs	Platinum Elite SMT LEDs	Platinum Elite SMT LEDs
Number of LEDs	72	72	48	48
Power output (luminous flux)	Up to 15,000 lm - circular beam Up to 14,500 lm - elliptical beam	Up to 15,000 lm - circular beam Up to 14,500 lm - elliptical beam	Up to 10,000 lm – circular beam Up to 9,000 lm – elliptical beam	Up to 10,000 lm – circular beam Up to 9,000 lm – elliptical beam
Wavelength	White-Light (also available in Intra-Red)	White-Light (also available in Intra-Red)	White-Light (also available in Intra-Red)	White-Light (also available in Intra-Red)
IP Rating	IP66 and IP67	IP66 and IP67	IP66 and IP67	IP66 and IP67
Temperature Range	-50°C to +55°C (-58°F to 131°F)	-20°C to +55°C (-4°F to 131°F)	-50°C to +55°C (-58°F to 131°F)	-20°C to +55°C (-4°F to 131°F)
Colour Temperature (White-Light)	6,000K +	6,000K +	6,000K +	6,000K +
Colour	Silver/Grey	Silver/Grey	Silver/Grey	Silver/Grey
Weight	27kg (59.6lbs)	29kg (63.9lbs)	16kg (35.2lbs)	20kg (44lbs)
Dimensions	562 x 367 x 156mm (22.1 x 14.4 x 6.1")	562 x 367 x 156mm (22.1 x 14.4 x 6.1")	291 x 438 x 151mm (11.4 x 17.2 x 5.9")	291 x 438 x 215mm (11.4 x 17.2 x 8.5")
Additional Features	CoolExtrude Thermal Management Removable PSU and LED modules Retention point for suspension cord SMART access wiring system Photocell (optional) T4, T5 and T6 Variants (T4 as standard)	CoolExtrude Thermal Management Removable PSU and LED modules Retention point for suspension cord SMART access wiring system Photocell (optional) T4, T5 and T6 Variants (T4 as standard)	CoolExtrude™ Thermal Management Removable PSU and LED modules Smart access wiring system Photocell (optional) T4, T5 and T6 Variants	CoolExtrude™ Thermal Management Removable PSU and LED modules Smart access wiring system Photocell (optional) T4, T5 and T6 Variants

Emergency Battery Back-up

Battery	Ni/Cd 12V	Ni/Cd 12V 4.5Ah
Duration	Up to 2 hours at 17% power (1 x battery unit) Other options available	Up to 2hrs @ 25% power (1 x battery unit) Other options available
Charge Time	20 hours	20 hours

Part Codes

Circular beam pattern	SPX-FL72-W-1010 / SPX-FL72-W-3030 / SPX-FL72-W-5050 / SPX-FL72-W-120120	SPX-FL72-W-1010-EM25 / SPX-FL72-W-3030-EM25/ SPX-FL72-W- 5050-EM25 /SPX-FL72-W-120120-EM25	SPX-FL48-W-1010 / SPX-FL48-W-3030 SPX-FL48-W-5050 / SPX-FL48-W-120120	SPX-FL48-W-1010-EM25 / SPX-FL48-W-3030-EM25 SPX-FL48-W-5050-EM25 / SPX-FL48-W-120120-EM25
Elliptical beam pattern	SPX-FL72-W-3510 / SPX-FL72-W-6025 / SPX-FL72-W-8030 / SPX-FL72-W-12050	SPX-FL72-W-3510-EM25 / SPX-FL72-W-6025-EM25 / SPX-FL72-W-8030-EM25 / SPX-FL72-W-12050-EM25	SPX-FL48-W-3510 / SPX-FL48-W-6025 SPX-FL48-W-8030 / SPX-FL48-W-12050	SPX-FL48-W-3510-EM25 / SPX-FL48-W-6025-EM25 SPX-FL48-W-8030-EM25 / SPX-FL48-W-12050-EM25



**SPARTAN
FLOOD FL24**



**SPARTAN
FLOOD FL24 Emergency**

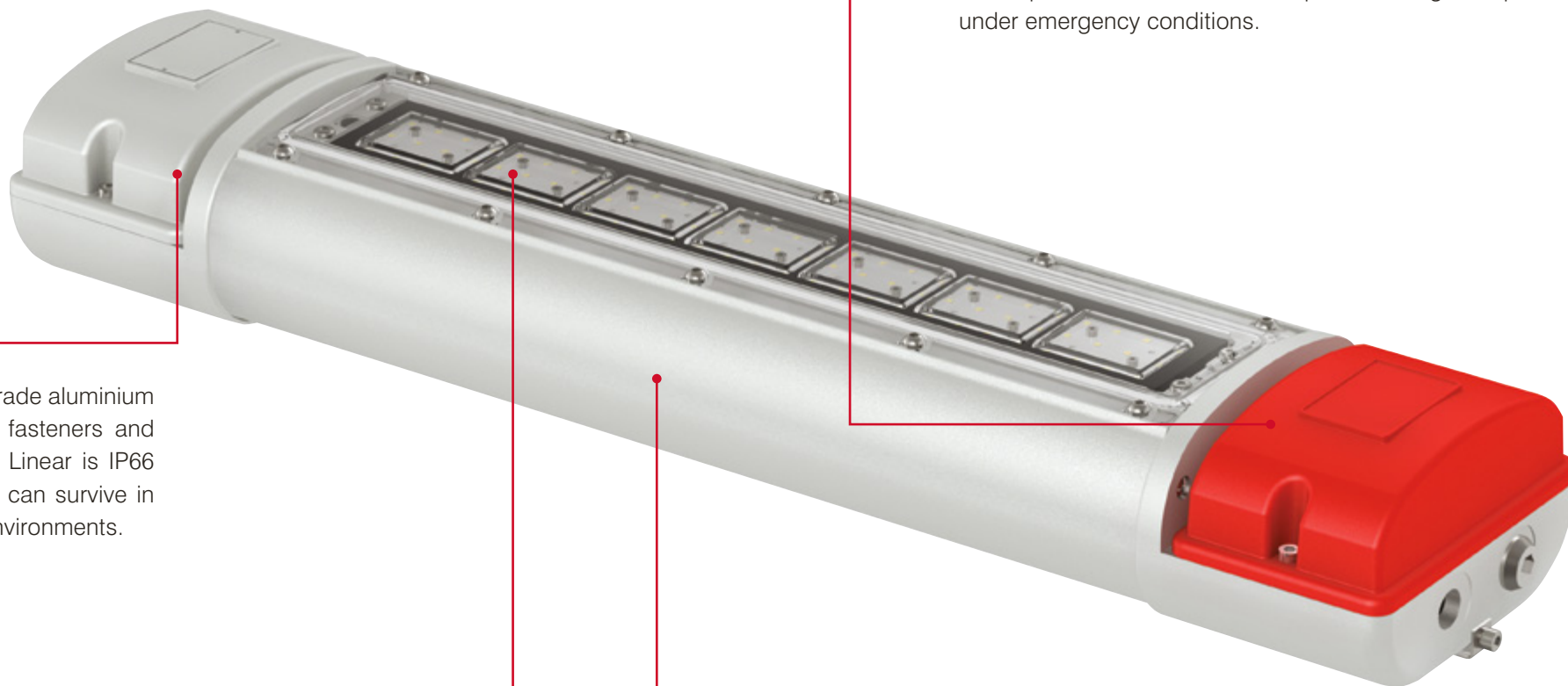


**SPARTAN
FLOOD FL12**

ATEX and IEC Ex rated for Zone 1&2 Gas and Dust UL/CSA including C1D2	ATEX and IEC Ex rated for Zone 1&2 Gas and Dust UL/CSA including C1D2 (pending)	ATEX and IEC Ex rated for Zone 1&2 Gas and Dust UL/CSA including C1D2
10°x10° / 35°x10° / 60°x25° / 80°x30° / 120°x50° + 30, 50 and 120° circular options	10°x10° / 35°x10° / 60°x25° / 80°x30° / 120°x50° + 30, 50 and 120° circular options	10°x10° / 35°x10° / 60°x25° / 80°x30° / 120°x50° + 30, 50 and 120° circular options
110-254V 50/60Hz AC only 18-30V AC/DC	110-254V 50/60Hz AC only	110-254V 50/60Hz AC only 18-30V AC/DC
Elliptical or Circular	Elliptical or Circular	Elliptical or Circular
VARIO interchangeable lens system (elliptical) / Fixed (circular)	VARIO interchangeable lens system (elliptical) / Fixed (circular)	VARIO interchangeable lens system (elliptical) / Fixed (circular)
68W	71W	34W
Platinum Elite SMT LEDs	Platinum Elite SMT LEDs	Platinum Elite SMT LEDs
24	24	12
Up to 5,000 lm – circular beam patterns Up to 4,500 lm – elliptical beam patterns	Up to 5,000 lm – circular beam patterns Up to 4,500 lm – elliptical beam patterns	Up to 2,500 lm – circular beam patterns Up to 2,250 lm – elliptical beam patterns
White-Light (also available in Infra-Red)	White-Light (also available in Infra-Red)	White-Light (also available in Infra-Red)
IP66 and IP67	IP66 and IP67	IP66 and IP67
-50°C to +55°C (-58°F to 131°F)	-20°C to +55°C (-4°F to 131°F)	-50°C to +55°C (-58°F to 131°F)
6,000K +	6,000K +	6,000K +
Silver/Grey	Silver/Grey	Silver/Grey
8kg (17.6lbs)	10Kg (22lbs)	5kg (11lbs)
291x247x150mm (11.5x9.7x6")	291x247x215mm (11.5x9.7x8.5")	192 x 206 x 170mm (7.6 x 8.1 x 6.7")
CoolExtrude™ Thermal Management Removable PSU and LED modules Smart access wiring system Photozell (optional) T4, T5 and T6 Variants	CoolExtrude™ Thermal Management Removable PSU and LED modules Smart access wiring system Photozell (optional) T4, T5 and T6 Variants	CoolExtrude™ Thermal Management Removable PSU and LED modules Smart access wiring system Photozell (optional) T4, T5 and T6 Variants
	Ni/Cd 12V 4.5Ah	
	Up to 2hrs @ 50% power Other options available	
	20 hours	
SPX-FL24-W-1010 / SPX-FL24-W-3030 SPX-FL24-W-5050 / SPX-FL24-W-120120	SPX-FL24-W-1010-EM50 / SPX-FL24-W-3030-EM50 SPX-FL24-W-5050-EM50 / SPX-FL24-W-120120-EM50	SPX-FL12-W-1010 / SPX-FL12-W-3030 SPX-FL12-W-5050 / SPX-FL12-W-120120
SPX-FL24-W-3510 / SPX-FL24-W-6025 SPX-FL24-W-8030 / SPX-FL24-W-12050	SPX-FL24-W-3510-EM50 / SPX-FL24-W-6025-EM50 SPX-FL24-W-8030-EM50 / SPX-FL24-W-12050-EM50	SPX-FL12-W-3510 / SPX-FL12-W-6025 SPX-FL12-W-8030 / SPX-FL12-W-12050

SPARTAN

LINEAR



Robust

Housed in marine grade aluminium with stainless steel fasteners and brackets, SPARTAN Linear is IP66 and IP67 rated and can survive in the most extreme environments.

Perfect, Crisp, Even Illumination

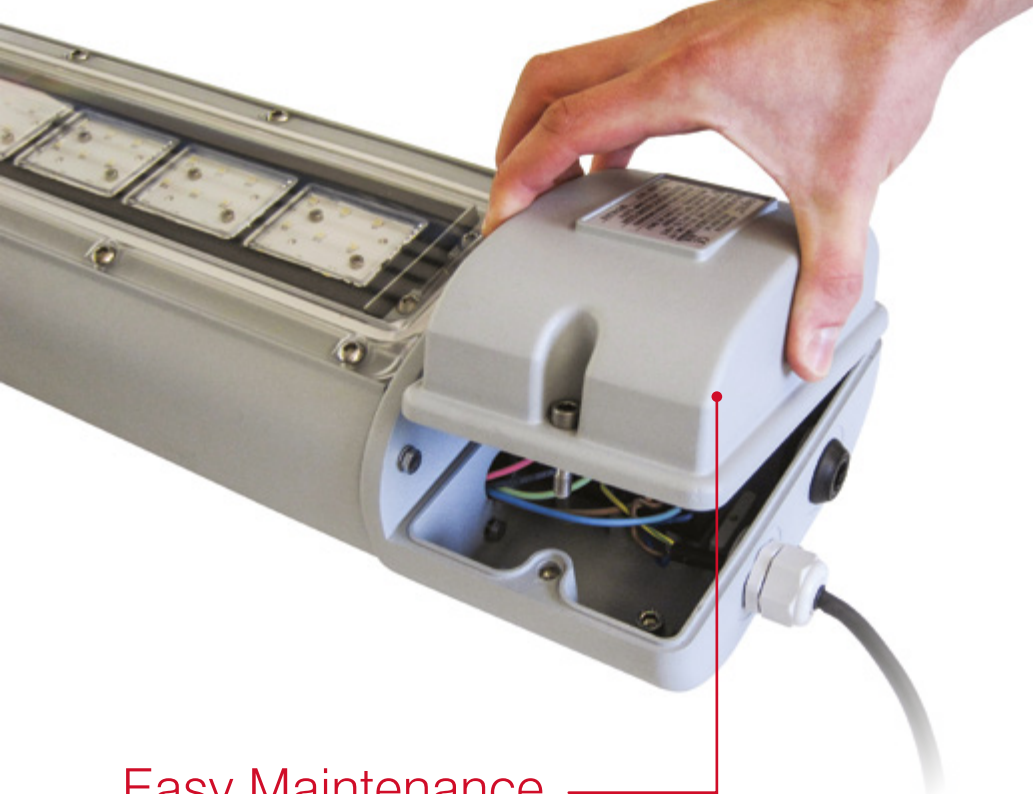
Multiple small profile, medium power SMT LEDs are used to deliver a crisp, uniform illumination without glare.

Emergency Back-Up

SPARTAN Linear is available as an emergency variant, and standard variants can be converted to an emergency fitting at any time on-site, using an additional battery back-up module which can run up to 100% light output under emergency conditions.

Wide Operating Temperature

An operating temperature range of -40°C to $+55^{\circ}\text{C}$ with a T4/T5/T6 rating means SPARTAN Linear is suitable for even the most challenging conditions.



Easy Maintenance

A maintenance friendly modular design allows quick and easy servicing and inspection of all key components including LED and PSU modules. SPARTAN Linear has also been designed without ledges to prevent dust or water from accumulating.



LED Friendly

SPARTAN Linear uses CoolExtrude™ thermal management technology, ensuring a much cooler LED operating temperature. This provides up to 60% better heat dissipation compared to traditional lighting solutions and allows the product to operate for 10+ years in the most challenging environments.

Retrofitable

SPARTAN Linear is a direct replacement for fluorescent fittings, meaning you can upgrade to LED light without complication.





Certification	ATEX and IECEx rated for Zone 1 Gas and Dust	ATEX and IECEx rated for Zone 1 Gas and Dust	ATEX and IECEx rated for Zone 1 Gas and Dust	ATEX and IECEx rated for Zone 1 Gas and Dust
Input	110-254V 50/60Hz AC only 18-30V AC/DC	110-254V 50/60Hz AC only	110-254V 50/60Hz AC only 18-30V AC/DC	110-254V 50/60Hz AC only
Beam Angle	120°, Equivalent to 2 x 36W T8 Fluorescent	120°, Equivalent to 2 x 36W T8 Fluorescent	120°, Equivalent to 2 x 18W T8 Fluorescent	120°, Equivalent to 2 x 18W T8 Fluorescent
Consumption	68W	71W	34W	37W
LED type	Platinum SMT LEDs	Platinum SMT LEDs	Platinum SMT LEDs	Platinum SMT LEDs
Number of LEDs	168	168	84	84
Power output (Luminous Flux)	Up to 5,000 lm, Equivalent to 2 x 36W T8 Fluorescent	Up to 5,000 lm, Equivalent to 2 x 36W T8 Fluorescent	Up to 2,500 lm, Equivalent to 2 x 18W T8 Fluorescent	Up to 2,500 lm, Equivalent to 2 x 18W T8 Fluorescent
Wavelength	White-Light	White-Light	White-Light	White-Light
IP Rating	IP66 and IP67	IP66 and IP67	IP66 and IP67	IP66 and IP67
Temperature Range	-40°C to +60°C (-40°F to +140°F)	-20°C to +60°C (-4°F to +140°F)	-40°C to +60°C (-40°F to +140°F)	-20°C to +60°C (-4°F to +140°F)
Colour Temperature (white-light)	6,000K +	6,000K +	6,000K +	6,000K +
Colour	Silver/Grey	Silver/Grey	Silver/Grey	Silver/Grey
Weight	9kg (19.8lbs)	10kg (22lbs)	6kg (13.2lbs)	7kg (15.4lbs)
Dimensions	1292 x 108 x 174mm (50.9 x 4.3 x 6.9")	1407 x 108 x 174mm (53.4 x 4.3 x 6.9")	772 x 108 x 174mm (30.4 x 4.3 x 6.9")	772 x 108 x 174mm (30.4 x 4.3 x 6.9")
Additional Features	CoolExtrude™ Thermal Management Removable PSU and LED modules Smart access wiring system Photocell (optional) T4, T5 and T6 Variants (T4 as standard)	CoolExtrude™ Thermal Management Removable PSU and LED modules Smart access wiring system Photocell (optional) T4, T5 and T6 Variants (T4 as standard)	CoolExtrude™ Thermal Management Removable PSU and LED modules Smart access wiring system Photocell (optional) T4, T5 and T6 Variants (T4 as standard)	CoolExtrude™ Thermal Management Removable PSU and LED modules Smart access wiring system Photocell (optional) T4, T5 and T6 Variants (T4 as standard)

Emergency Battery Back-up

Battery		Ni/Cd 12V		Ni/Cd 12V
Duration		Up to 3hrs @ 25% power Other options available		Up to 3hrs @ 25% power Other options available
Charge Time		20 hours		20 hours

Part Codes

	SPX-WL168	SPX-WL168-EM25	SPX-WL84	SPX-WL84-EM25
--	-----------	----------------	----------	---------------



Certification	ATEX and IECEx rated for Zone 2 Gas and Dust	ATEX and IECEx rated for Zone 2 Gas and Dust	ATEX and IECEx rated for Zone 2 Gas and Dust	ATEX and IECEx rated for Zone 2 Gas and Dust
Input	110-254V 50/60Hz AC only 18-30V AC/DC	110-254V 50/60Hz AC only	110-254V 50/60Hz AC only 18-30V AC/DC	110-254V 50/60Hz AC only
Beam Angle	120°, Equivalent to 2 x 36W T8 Fluorescent	120°, Equivalent to 2 x 36W T8 Fluorescent	120°, Equivalent to 2 x 18W T8 Fluorescent	120°, Equivalent to 2 x 18W T8 Fluorescent
Consumption	68W	71W	34W	37W
LED type	Platinum SMT LEDs	Platinum SMT LEDs	Platinum SMT LEDs	Platinum SMT LEDs
Number of LEDs	168	168	84	84
Power output (Luminous Flux)	Up to 5,000 lm, Equivalent to 2 x 36W T8 Fluorescent	Up to 5,000 lm, Equivalent to 2 x 36W T8 Fluorescent	Up to 2,500 lm, Equivalent to 2 x 18W T8 Fluorescent	Up to 2,500 lm, Equivalent to 2 x 18W T8 Fluorescent
Wavelength	White-Light	White-Light	White-Light	White-Light
IP Rating	IP66 and IP67	IP66 and IP67	IP66 and IP67	IP66 and IP67
Temperature Range	-40°C to +60°C (-40°F to +140°F)	-20°C to +60°C (-4°F to +140°F)	-40°C to +60°C (-40°F to +140°F)	-20°C to +60°C (-4°F to +140°F)
Colour Temperature (white-light)	6,000K +	6,000K +	6,000K +	6,000K +
Colour	Dark Grey	Dark Grey	Dark Grey	Dark Grey
Weight	9kg (19.8lbs)	10kg (22lbs)	6kg (13.2lbs)	7kg (15.4lbs)
Dimensions	1292 x 108 x 174mm (50.9 x 4.3 x 6.9")	1407 x 108 x 174mm (53.4 x 4.3 x 6.9")	772 x 108 x 174mm (30.4 x 4.3 x 6.9")	772 x 108 x 174mm (30.4 x 4.3 x 6.9")
Additional Features	CoolExtrude™ Thermal Management Removable PSU and LED modules Smart access wiring system Photocell (optional) T4, T5 and T6 Variants (T4 as standard)	CoolExtrude™ Thermal Management Removable PSU and LED modules Smart access wiring system Photocell (optional) T4, T5 and T6 Variants (T4 as standard)	CoolExtrude™ Thermal Management Removable PSU and LED modules Smart access wiring system Photocell (optional) T4, T5 and T6 Variants (T4 as standard)	CoolExtrude™ Thermal Management Removable PSU and LED modules Smart access wiring system Photocell (optional) T4, T5 and T6 Variants (T4 as standard)

Emergency Battery Back-up

Battery		Ni/Cd 12V		Ni/Cd 12V
Duration		Up to 3hrs @ 25% power Other options available		Up to 3hrs @ 25% power Other options available
Charge Time		20 hours		20 hours

Part Codes

	SPZ-WL168	SPZ-WL168-EM25	SPZ-WL84	SPZ-WL84-EM25
--	-----------	----------------	----------	---------------

SPARTAN BULKHEAD



LED Friendly

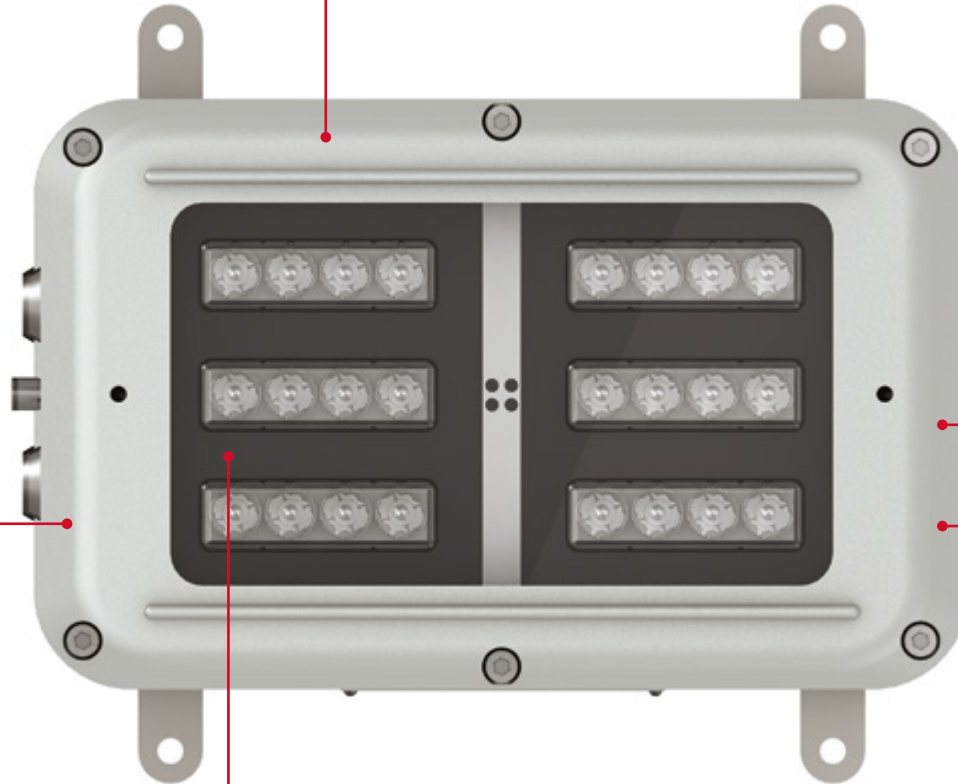
SPARTAN Bulkhead uses CoolExtrude™ thermal management technology, ensuring a much cooler LED operating temperature. This provides up to 60% better heat dissipation compared to traditional lighting solutions and allows the product to operate for 10+ years in the most challenging environments.

Emergency Back-Up

SPARTAN Bulkhead is available as an emergency variant, and standard variants can be converted to an emergency fitting at any time on-site, using an additional battery back-up module which can run up to 100% light output under emergency conditions.

Compact

SPARTAN Bulkhead has a compact, low profile design for restricted space applications. It also allows easy access to the back of the unit with rear cable entries, so cabling can be hidden and protected from damage.



Robust

Housed in marine grade aluminium with stainless steel fasteners and brackets, SPARTAN Bulkhead is IP66 and IP67 rated and can survive in the most extreme environments.

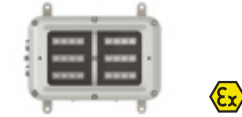
Wide Operating Temperature

An operating temperature range of -50°C to +46°C* with a T4/T5/T6 rating means SPARTAN Bulkhead is suitable for even the most challenging conditions.

** Emergency variants have an operating temperature of -20°C to +46°C*



SPARTAN
BULKHEAD BL24



SPARTAN
BULKHEAD BL24 Emergency

Certification	ATEX and IEC Ex rated for Zone 1&2 Gas and Dust UL/CSA including C1D2 (pending)	ATEX and IEC Ex rated for Zone 1&2 Gas and Dust UL/CSA including C1D2 (pending)
Angles	10°x10° / 35°x10° / 60°x25° / 80°x30° / 120°x50° + 30, 50 and 120° circular options	10°x10° / 35°x10° / 60°x25° / 80°x30° / 120°x50° + 30, 50 and 120° circular options
Input	110-254V 50/60Hz AC only 18-30V AC/DC	110-254V 50/60Hz AC only
Beam Shape	Elliptical or Circular	Elliptical or Circular
Beam Angle System	VARIO interchangeable lens system (elliptical) / Fixed (circular)	VARIO interchangeable lens system (elliptical) / Fixed (circular)
Consumption	34W	37W
LED type	Platinum Elite SMT LEDs	Platinum Elite SMT LEDs
Number of LEDs	24	24
Power output (luminous flux)	Up to 2,500 lm – circular beam patterns Up to 2,250 lm – elliptical beam patterns	Up to 2,500 lm – circular beam patterns Up to 2,250 lm – elliptical beam patterns
Wavelength	White-Light (also available in Infra-Red)	White-Light (also available in Infra-Red)
IP Rating	IP66 and IP67	IP66 and IP67
Temperature Range	-50°C to +46°C (-58°F to 114°F)	-20°C to +46°C (-4°F to 114°F)
Colour Temperature (White-Light)	6,000K +	6,000K +
Colour	Silver / Grey	Silver / Grey
Weight	5kg (11lbs)	6kg (13.2lbs)
Dimensions	288 x 220x 122mm (11.3 x 8.7 x 4.8")	288 x 220x 122mm (11.3 x 8.7 x 4.8")
Additional Features	CoolExtrude™ Thermal Management Removable PSU and LED modules Smart access wiring system Photocell (optional) T4 and T5 Variants (T4 as standard)	CoolExtrude™ Thermal Management Removable PSU and LED modules Smart access wiring system Photocell (optional) T4 and T5 Variants (T4 as standard)

Emergency Battery Back-up

Battery	Ni/cd 12V
Duration	Up to 3hrs @ 25% power Other options available
Charge Time	25 hours

Part Codes

Circular beam pattern	SPX-BL24-W-1010 SPX-BL24-W-3030 SPX-BL24-W-5050 SPX-BL24-W-120120	SPX-BL24-W-1010-EM25 SPX-BL24-W-3030-EM25 SPX-BL24-W-5050-EM25 SPX-BL24-W-120120-EM25
Elliptical beam pattern	SPX-BL24-W-3510 SPX-BL24-W-6025 SPX-BL24-W-8030 SPX-BL24-W-12050	SPX-BL24-W-3510-EM25 SPX-BL24-W-6025-EM25 SPX-BL24-W-8030-EM25 SPX-BL24-W-12050-EM25

SPARTAN

CRANE LUMINAIRE



Vibration Resistant

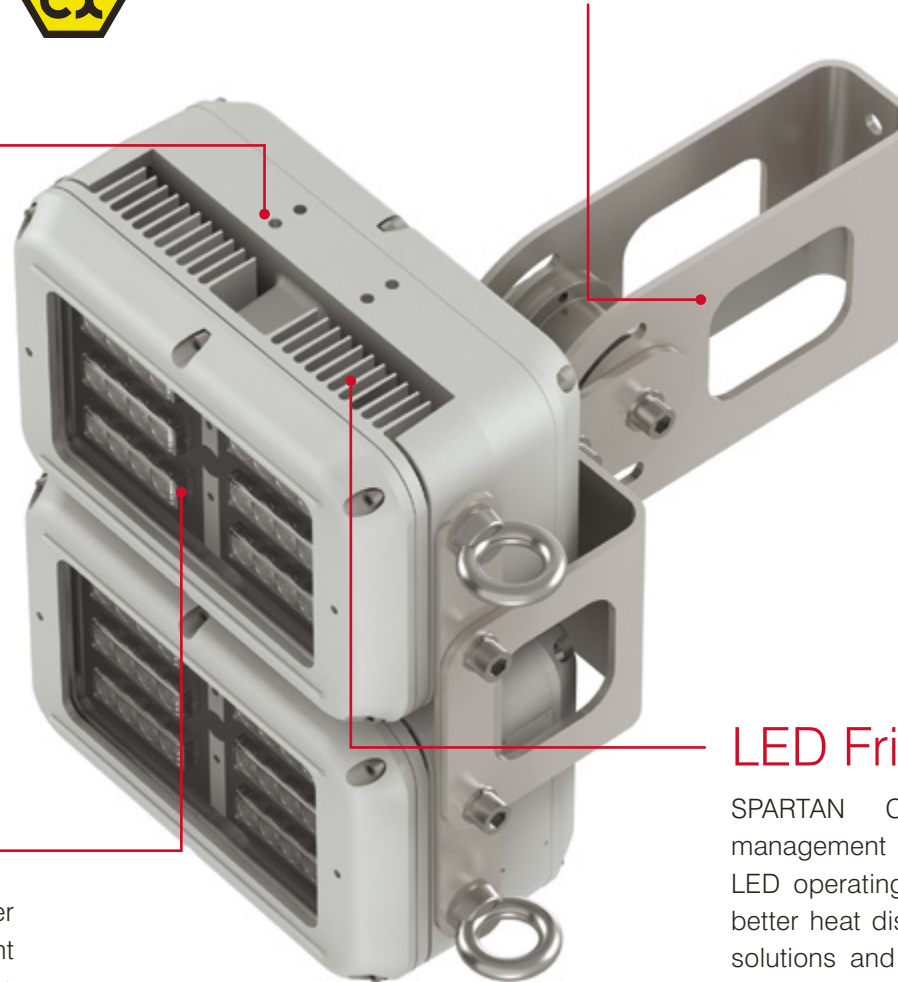
SPARTAN Crane uses high performance surface mount LEDs that are encapsulated in a silicone rubber compound. All power electronics in SPARTAN Crane are also encapsulated. The result is an outstanding resistance to vibration for the most demanding applications.

Ultra-Powerful

SPARTAN Crane integrates the latest high power LEDs with Raytec's field proven LED management and optic technology. This delivers a high lumen output of up to 10,000 lumens even during emergency operation when running off the integral battery.

Self-Levelling

A stainless steel rotary damper ensures SPARTAN Crane always illuminates the area directly below the crane and prevents the luminaire swinging as the crane boom moves up and down.



LED Friendly

SPARTAN Crane uses CoolExtrude™ thermal management technology, ensuring a much cooler LED operating temperature. This provides up to 60% better heat dissipation compared to traditional lighting solutions and allows the product to operate for 10+ years in the most challenging environments.



SPARTAN
CRANE LUMINAIRE FL48C

Certification	ATEX and IEC Ex rated for Zone 1 & 2 Gas and Dust UL/CSA including C1D2
Angles	10°x10° / 35°x10° / 60°x25° / 80°x30° / 120°x50° +30, 50 and 120° circular options
Input	110-253V 50/60Hz AC only 18-30V AC/DC
Beam Shape	Elliptical or Circular
Beam Angle System	VARIO interchangeable lens system (elliptical) / Fixed (circular)
Consumption	136W
LED type	Platinum Elite SMT LEDs
Number of LEDs	48
Power output (luminous flux)	Up to 10,000 lm - circular beam Up to 9,000 lm - elliptical beam
Wavelength	White-Light
IP Rating	IP66 and IP67
Temperature Range	-10°C to +55°C (14°F to 131°F)
Colour Temperature (White-Light)	6,000K+
Colour	Silver/Grey
Weight	25kg (55.12lbs)
Dimensions	312 x 375 x 467mm (12.3 x 14.8 x 13.5")
Additional Features	Stainless steel rotary damper 2 x retention points for suspension cord CoolExtrude Thermal Management Removable PSU and LED modules SMART access wiring system T4, T5 and T6 Variants (T4 as standard)

Part Codes

Circular beam pattern	SPX-FL48C-W-1010 SPX-FL48C-W-3030 SPX-FL48C-W-5050 SPX-FL48C-W-120120
Elliptical beam pattern	SPX-FL48C-W-3510 SPX-FL48C-W-6025 SPX-FL48C-W-8030 SPX-FL48C-W-12050

Accessories



SAND BLAST SHIELD KIT



SUSPENSION CORD KIT



POLE CLAMP KIT



M8 EYE BOLT KIT

Part Code	SPX - BKT - SB	SPX - BKT - SC500 SPX - BKT - SC1000 SPX - BKT - SC1500	SPX - BKT - PC3841 SPX - BKT - PC4245 SPX - BKT - PC4851 SPX - BKT - PC5457 SPX - BKT - PC5962	SPX - BKT - EYE
Description		500mm Long, Stainless Steel 1000mm Long, Stainless Steel 1500mm Long, Stainless Steel	38-41mm Diameter, Stainless Steel 42-45mm Diameter, Stainless Steel 48-51mm Diameter, Stainless Steel 54-57mm Diameter, Stainless Steel 59-62mm Diameter, Stainless Steel	Stainless Steel
Suitable for	Flood Bulkhead	Flood Bulkhead Linear	Linear Bulkhead	Linear



CEILING MOUNTING KIT



SWIVEL MOUNT KIT



WALL MOUNTING OUTREACH BRACKET



MAGNETIC MOUNTING KIT

Part Code	SPX - BKT - CM	SPX=BKT-SW	SPX - BKT - WMOB84 SPX - BKT - WMOB168	SPX-BKT-MAG
Description	Stainless Steel	30° and 45° Increments, Stainless Steel		
Suitable for	Linear	Linear	Linear	Linear Bulkhead



FRONT GUARD



VARIO DIFFUSER

Part Code	SPX-WG-FL12 SPX-WG-FL24	Contact Raytec for code
Description	Stainless Steel	Circular and Elliptical Beam Patterns, 10° to 120°. 8 options.
Suitable for	Flood Bulkhead	Flood Bulkhead



FLOOR MOUNT



ANTI-STATIC POLYCARBONATE LENS

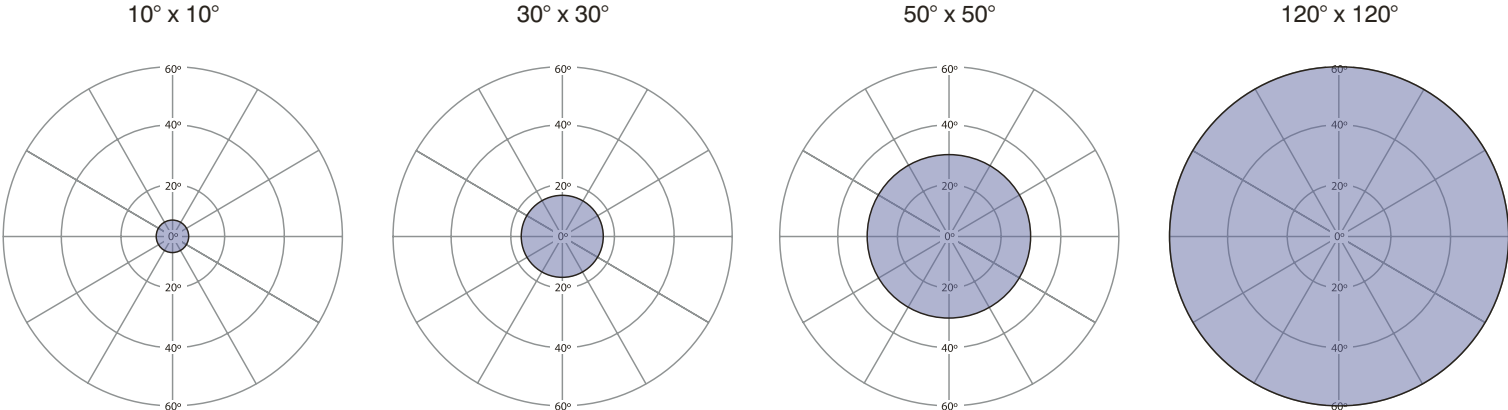
Part Code	SPX-BKT-BFL	SPX-BKT-DL
Description	Bulkhead Floor Mount Bracket, Portrait Orientation, Stainless Steel	Polycarbonate Diffused Lens
Suitable for	Bulkhead	Linear

Beam Patterns

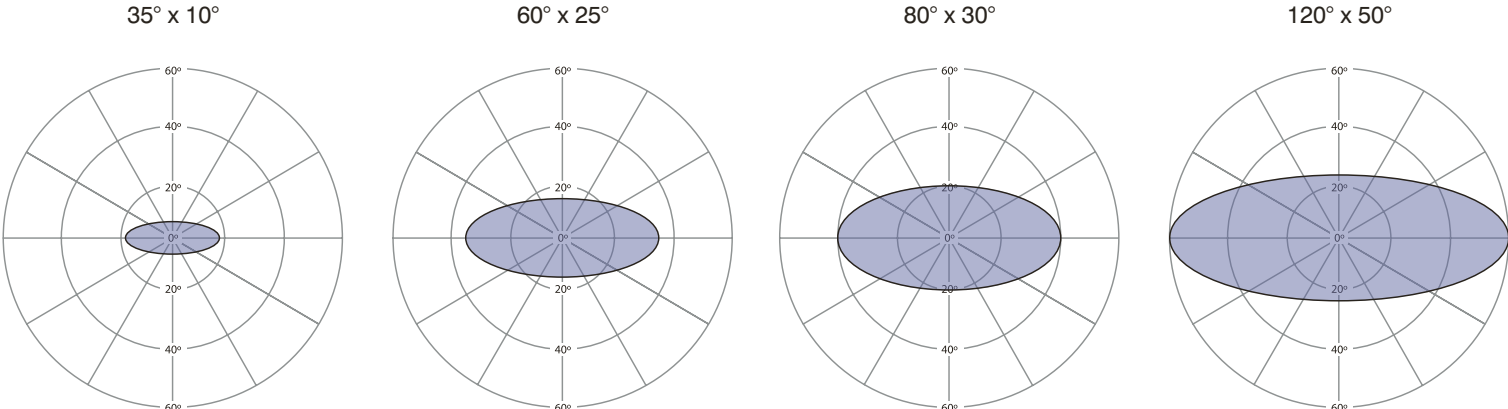
Raytec offer a range of different interchangeable beam patterns that can be easily altered on site delivering the ultimate flexibility to specifiers, distributors and end users.

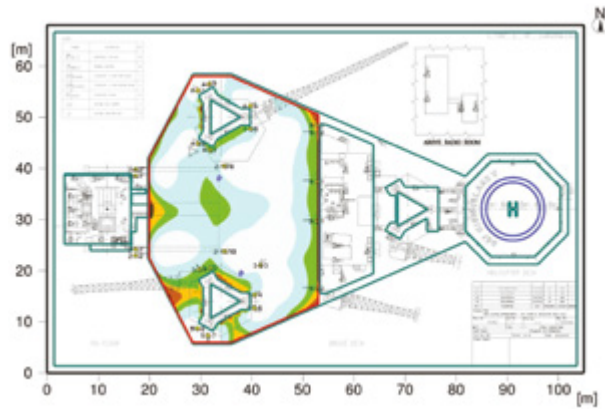
The circular beam patterns maximise light output while the elliptical beam patterns use Raytec's revolutionary VARIO holographic lens technology to shape the light providing greater illumination distances with significantly reduced energy wastage.

BEAM PATTERNS - CIRCULAR



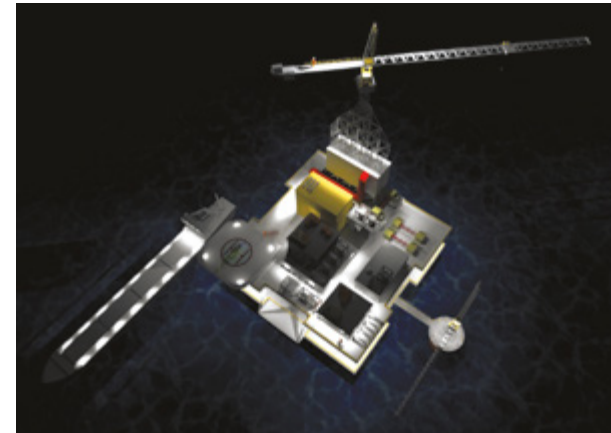
BEAM PATTERNS – ELLIPTICAL (VARIO)





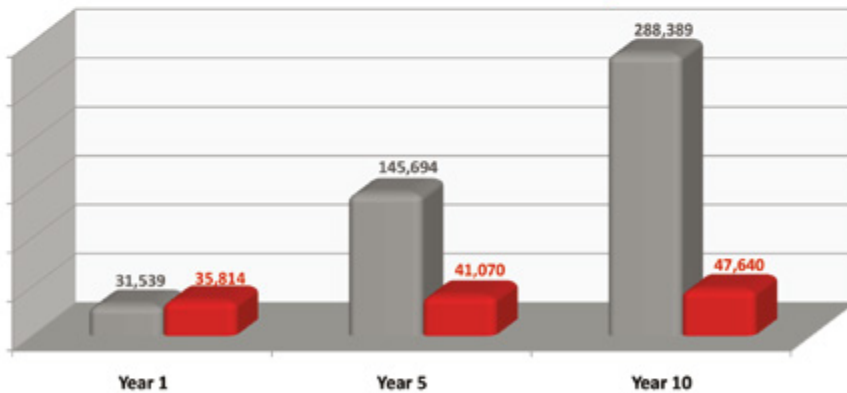
2D Lighting Design

- Detailed plan of the site
- Recommended product type
- Recommended number of lights
- Average, max and min light levels



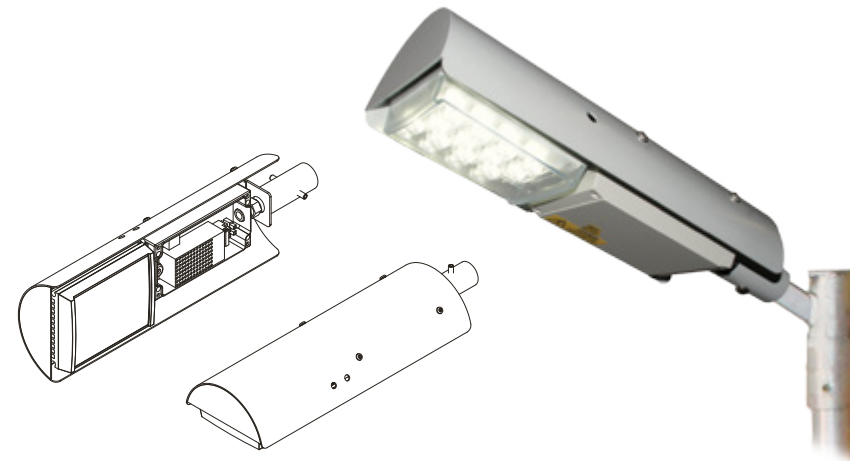
3D Lighting Design

- Visual representation of the site
- Recommended product type
- Recommended number of lights
- Average, max and min light levels



Energy and Cost Saving Report

- Customer specific survey
- Energy, CO2 savings and ROI
- Cost savings over 1, 5 and 10 years



Special Operations Division

- Custom-Built Product Design
- Bespoke Projects
- Challenging Applications



Hazardous Area Lighting
with Worldwide Certification

Distributed by



**ECO
LIGHT**

ECOLight (A division of TransNet NZ Ltd)
20 Neilpark Drive
East Tamaki
Auckland

p: +64 9 272 5619
f: +64 9 274 5490
e: info@ecolight.co.nz
w: www.ecolight.co.nz